

ADVANCING INNOVATION AND OUR COMMUNITY

For 85 years the University of Miami has served the citizens of Miami-Dade County through education, research, health care services, community outreach, and economic development. Our commitment to helping people become productive, healthier, and more engaged in the world around them extends beyond our campuses and reaches into the heart of our community.

The new UM Life Science & Technology Park (UM LSTP) will be both an important resource and a good neighbor for Overtown and the surrounding communities.

This project involving the University of Miami Leonard M. Miller School of Medicine located in Miami's Health District and the College of Engineering will bring together faculty, scientists, students, business entrepreneurs, and industry to create new technologies and companies. The UM LSTP will encourage collaboration and spark innovation that benefits our community and our world.

The first phase of the UM LSTP is now being built by private developer Wexford Science & Technology, LLC, a national leader in the development of life science and technology research parks. As developer, Wexford is responsible for financing the building in full. It will be a 252,000-square-foot building that will house wet and dry labs, offices, retail, and lab-ready development suites. Following the completion of Phase One in mid-2011, the project will be built out in phases as tenants are secured.

Working together, the University and Wexford are committed to establishing long-term community relationships that promote opportunities.



EDUCATIONAL PROGRAMS

SPEC-EY: This program develops seventh- through ninth-grade youths who reside in Town Park Village through a focus on personal, organizational, and community well-being. For more information, call 305-284-6907 or e-mail dnogueras@miami.edu.

Overtown Youth Center Health Promotion Program for Women: This program provides psycho-education and stress management as well as a support group. For more information, call 305-284-6907 or e-mail dnogueras@miami.edu.



City Year receives a \$100,000 donation to support its activities at Phillis Wheatley Elementary School.

Phillis Wheatley Elementary School and City Year: Funded by a grant from Wexford and Urban Research Park CDE, City Year corps team members serve as tutors, mentors, and role models to Overtown school children.

Allapattah Middle School: This school has been a community partner of UHealth/Miller School of Medicine for the past three years.

Linda Ray Intervention Center: This College of Arts and Sciences' Department of Psychology program focuses on at-risk children, newborn to age 3, to prepare them for formal education settings in Head Start and kindergarten with school readiness skills. For more information, call 305-325-1818.

For additional information on more than 100 UM community outreach programs, search the 'Canes in the Community' website at www.miami.edu/canesthcommunity or call 305-284-4094.

For more information on the University of Miami Life Science & Technology Park, visit www.umlsp.com or contact: Richard Schuchts, Catarina Jimenez, or Gavin Macphail at Jones Lang LaSalle, 305-728-8999, umpark@am.jll.com; or University of Miami Government Affairs/Community Relations, 305-348-4085, umcommunity@miami.edu.

UNIVERSITY OF MIAMI
**LIFE SCIENCE &
TECHNOLOGY PARK**



UNIVERSITY OF MIAMI

LIFE SCIENCE

&

TECHNOLOGY

PARK



AND THE COMMUNITY

BUILDING RELATIONSHIPS



As the first phase of the UM Life Science & Technology Park prepares for its summer 2011 opening, the University of Miami and Wexford are taking steps to establish new initiatives designed to benefit area residents. More than building a research park, we are building relationships. By working with community, educational, business, and health organizations, the UM LSTP will be better able to address community interests.

NBA great Alonzo Mourning, Overtown Youth Center Executive Director Carla Penn, and Miller School Dean Pascal J. Goldschmidt at the opening of the OYC Clinic.

The UM LSTP is already helping to make a difference in Overtown. Thanks to the efforts of Wexford and the Urban Research Park CDE, LLC, the project has contributed \$700,000 in grants to not-for-profit community organizations that serve Overtown and surrounding areas. These organizations have a direct impact on Overtown residents. The grants will fund a variety of projects, including special youth health programs, educational mentoring and after-school initiatives, essential services to help end chronic homelessness, and specialized academic and vocational training for developmentally disabled adults.

HELPING STUDENTS PURSUE THEIR DREAMS

The University of Miami is committed to helping all academically qualified students secure an education at our institution. Last year UM students received approximately \$385 million in financial assistance, and 95 percent of degree-seeking undergraduate students from Florida receive some form of financial aid, excluding loans. UM is among the nation's most diverse major private research universities and has targeted programs to increase minority student enrollment.

For a complete listing of scholarships available to eligible black/African-Descent students, search our scholarship database at www.miami.edu/scholarships.

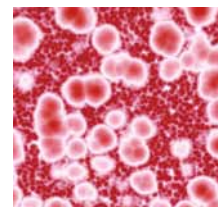
For more information on special programs for minority students at the University of Miami, please contact Multicultural Student Affairs at 305-284-2855 or www.miami.edu/msa.

CREATING OPPORTUNITY

The University and Wexford are committed to having workers, contractors, and vendors from our local and minority communities work on the UM LSTP construction.

To that end, we are working closely with the Miami-Dade Chamber of Commerce, which advocates for the needs of the black business community. Wexford has committed to a minimum of 15 percent of the construction contracts being awarded to minority and small businesses—and to date, actual awards have outpaced this goal.

According to an independent report by The Washington Economics Group, Inc. (WEG), the first phase of the UM LSTP is projected to create 507 construction jobs over the two-year construction period. The WEG report estimates that when the initial phase of the UM LSTP is completed and fully occupied, approximately 320 professionals and associated support staff will work at the park.



In addition, the UM LSTP will generate economic impacts beyond those directly related to activities at the park. Overall the UM LSTP is projected to create an additional 2,773 jobs in a variety of industries and trades.

Recognizing the importance of sustaining the long-term employment needs of the UM LSTP, Overtown, and neighboring communities, the University and Wexford are developing relationships with local educational institutions. These partnerships will help to provide training for job-seekers to obtain the skills and knowledge needed for employment at the UM LSTP.

A RECORD OF SERVICE TO THE OVERTOWN COMMUNITY

The University of Miami has a long tradition of providing free and low-cost community services ranging from health screenings and after-school tutoring to legal advice and parenting workshops. In the Overtown community, in particular, UM provides educational and health care services—some through our affiliated organization, Jackson Memorial Hospital, and others directly. In addition to these ongoing programs, our students and faculty volunteer thousands of hours each year in the community. These outreach efforts not only provide vital services, they also directly connect learning with service to the greater community, which supports our institutional missions.

HEALTH PROGRAMS AND CLINICS

Jefferson Reaves Sr. Health Center: Located at 1009 N.W. 5th Avenue, this facility is a focal point for health care services in the Overtown community. It provides comprehensive services in pediatrics, adolescent, and adult medicine focusing on low-risk obstetrics, gynecology, geriatrics, diabetes management, mental health care, and immunization programs. For more information, call 786-466-4000.

Jay Weiss Center for Social Medicine and Health Equity: Based at the Miller School of Medicine, the Jay Weiss Center's programs reach out into the community. They include education for HIV+ adults through the COACH (Counseling on Access and Community Health) program; a monthly newsletter on health and community activities in Overtown; health education workshops at Lotus House, Urgent Inc., and Overtown Youth Center; and collaborations with the UM Pediatric mobile clinic. The center has also begun training community health promoters to help diabetic patients. For more information, call 305-243-8893.

UHealth Overtown Youth Center Clinic: A mini-clinic providing care to the center's youth and their families, this program brings volunteer UHealth physicians to the Overtown Youth Center three times a week to provide check-ups for enrolled children and families. Services include: health education, promotion of health literacy, mental health screening and referral, medical referrals, and community outreach. For more information, call 305-243-9224.

See back panel for educational program highlights.